

**SINGLE NOTE LINES PRECEDED BY A BASS NOTE**

Improvise melodic lines on courses 1,2,3 and 4 and play the bass notes on courses 4,5 and 6. Remember you are still playing in the key of C Major, only the bass notes changed. As a matter of fact every bass note is the root of a mode. Every scale has a many modes as it has notes in it.

For your information here they are. It's good to be aware of them but they are not essential for our further explorations in improvisation.

- Ionian : C D E F G A B C
  - Dorian : D E F G A B C D
  - Phrygian : E F G A B C D E
  - Lydian : F G A B C D E F
  - Mixolydian : G A B C D E F G
  - Aeolian : A B C D E F G A
  - Locrian : B C D E F G A B
- No accidentals involved !

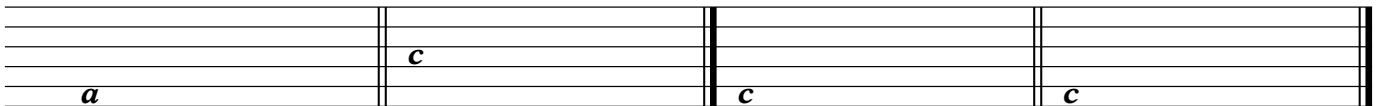
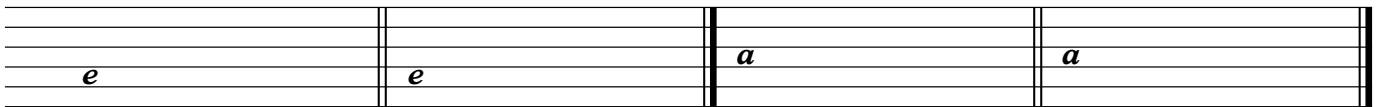
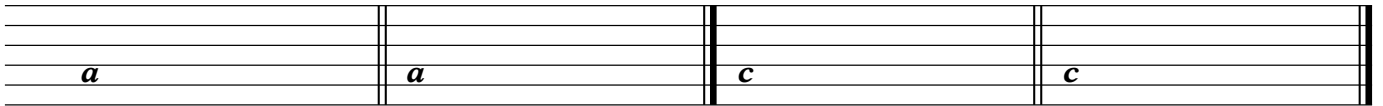
Play a melodic line preceded by a bass note on the first beat of each bar. Here are some examples.

The musical examples are as follows:

- Row 1:**
  - Measure 1: courses 3,2,1. Bass: *a*. Melody: *c* (finger 1), *d* (finger 2), *a* (finger 1), *c* (finger 1), *e* (finger 2), *c* (finger 1), *a* (finger 1).
  - Measure 2: courses 4, 3,2,1. Bass: *a*. Melody: *f* (finger 1), *e* (finger 2), *a* (finger 1), *a* (finger 1), *d* (finger 2), *a* (finger 1).
  - Measure 3: courses 4,3,2,1. Bass: *c*. Melody: *a* (finger 1), *d* (finger 2), *d* (finger 2), *c* (finger 1), *c* (finger 1), *a* (finger 1), *a* (finger 1).
  - Measure 4: courses 4,3,2. Bass: *c*. Melody: *c* (finger 1), *d* (finger 2), *c* (finger 1), *a* (finger 1), *c* (finger 1), *a* (finger 1).
- Row 2:**
  - Measure 1: courses 3,2,1. Bass: *e*. Melody: *e* (finger 1), *c* (finger 1), *d* (finger 2), *a* (finger 1), *d* (finger 2).
  - Measure 2: courses 3,1. Bass: *e*. Melody: *a* (finger 1), *e* (finger 2), *c* (finger 1), *a* (finger 1), *c* (finger 1), *a* (finger 1).
  - Measure 3: courses 2,1. Bass: *a*. Melody: *d* (finger 2), *c* (finger 1), *d* (finger 2), *c* (finger 1), *f* (finger 1).
  - Measure 4: courses 3,2,1. Bass: *a*. Melody: *d* (finger 2), *a* (finger 1), *d* (finger 2), *c* (finger 1), *a* (finger 1), *a* (finger 1), *c* (finger 1).
- Row 3:**
  - Measure 1: courses 2,1. Bass: *c*. Melody: *a* (finger 1), *c* (finger 1), *e* (finger 2), *d* (finger 2), *f* (finger 1), *a* (finger 1), *c* (finger 1).
  - Measure 2: courses 4,3,2,1. Bass: *a*. Melody: *c* (finger 1), *d* (finger 2), *a* (finger 1), *c* (finger 1), *a* (finger 1), *c* (finger 1).
  - Measure 3: courses 3,2. Bass: *c*. Melody: *d* (finger 2), *a* (finger 1), *a* (finger 1), *c* (finger 1), *a* (finger 1), *c* (finger 1).
  - Measure 4: courses 3,2,1. Bass: *e*. Melody: *d* (finger 2), *c* (finger 1), *a* (finger 1), *e* (finger 2), *a* (finger 1), *c* (finger 1).
- Row 4:**
  - Measure 1: courses 4,3,2. Bass: *e*. Melody: *a* (finger 1), *c* (finger 1), *a* (finger 1), *a* (finger 1), *c* (finger 1), *a* (finger 1).
  - Measure 2: courses 3,2,1. Bass: *e*. Melody: *e* (finger 2), *a* (finger 1), *d* (finger 2), *a* (finger 1), *c* (finger 1), *f* (finger 1).

**Your turn**

Improvise a melodic line preceded by a sustained bass note.



**Practise on this ground.**

(A 'Ground' in this book simply refers to a series of bass notes used as a basis for improvisation)

<i>a</i>	<i>a</i>	<i>e</i>	<i>c</i>

<i>c</i>	<i>a</i>	<i>e</i>	<i>a</i>

**Example**

<i>c a d c f</i>	<i>a e c</i>	<i>a a d</i>	<i>c a c a</i>
<i>a</i>	<i>a d c</i>	<i>e</i>	<i>c a</i>

<i>a d d c a a</i>	<i>d a a f e c</i>	<i>c d a a</i>	<i>d c</i>
<i>c</i>	<i>a</i>	<i>e</i>	<i>a</i>

**Your turn**

<i>a</i>	<i>a</i>	<i>e</i>	<i>c</i>

<i>c</i>	<i>a</i>	<i>e</i>	<i>a</i>